

HEARTS

KNITTING PATTERNS BY AMANDA BERRY

fluffandfuzz@googlemail.com
www.fluffandfuzz.weebly.com

YARN + NOTIONS

Needles:

- A pair of 3.75mm straight knitting needles (US 5)

Notions:

- A small amount of toy filling to stuff the heart
- A darning or tapestry needle to sew the knitted pieces together
- A stitch holder

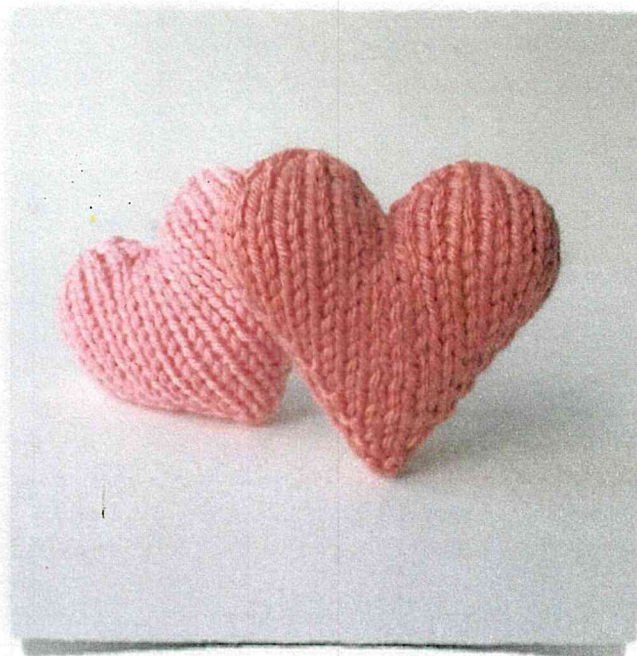
Yarn:



Pink

Less than 10g of DK yarn per heart

CAN BE ANY COLOUR FOR GOODY BAGS
OR RED FOR ICU/ED PATIENTS



NOTES

Finished size: The finished heart is approximately 6.5cm high x 6.5cm wide.

Work flat: All pieces are knitted flat (back and forth) on a pair of straight knitting needles.

Tension: The tension is approximately 22 sts x 28 rows for a 10cm x 10cm square in stockinette stitch on 3.75mm needles. Don't worry too much about tension for this pattern.

Casting on: Unless otherwise specified, use the long tail cast on for all pieces.

Sewing seams: Use mattress stitch to sew the seams.

Copyright © 2016 Amanda Berry
All patterns designed by Amanda Berry are protected by international copyright laws. Any unauthorised copying will constitute an infringement of copyright.
All rights reserved.

ABBREVIATIONS

DK Double knitting or light worsted weight yarn

k Knit

k2tog *Decrease:* knit two stitches together.

m1 *Increase:* Make one stitch by picking up the horizontal bar between the needles and placing it on the left-hand needle. Knit into the back of this loop.

p Purl

Pull through to cast off

Cut the yarn leaving at least a

30cm tail. Thread the tail onto a darning needle and sew through the remaining sts on the knitting needle. Pull the sts off the knitting needle on to the yarn, gather together tightly and secure the yarn.

rep Repeat

RS Right side

ssk *Decrease:* slip the next stitch on the left needle knit-wise, then slip the next stitch on the left needle purl-wise. Take the left needle and knit through the front of the

two slipped stitches on the right needle

st(s) Stitch(es)

WS Wrong side

[...] Repeat the sequence between the square brackets by the number indicated.

(.. sts) The number in round brackets at the end of the instruction indicates the number of stitches after working the row.

KNITTING PATTERNS

Love Heart

Make 1. Cast on 6 sts in pink on straight 3.75mm needles. Start at the bottom tip of the heart.

Row 1: p (6 sts, WS)

Row 2: [k1, m1] x 2, k2, [m1, k1] x 2 (10 sts)

Row 3: p (10 sts)

Row 4: k2, [m1, k1] x 2, k3, [m1, k1] x 2, k1 (14 sts)

Row 5: p (14 sts)

Row 6: k3, [m1, k1] x 2, k5, [m1, k1] x 2, k2 (18 sts)

Row 7: p (18 sts)

Row 8: k4, [m1, k1] x 2, k7, [m1, k1] x 2, k3 (22 sts)

Row 9: p (22 sts)

Row 10: k5, [m1, k1] x 2, k9, [m1, k1] x 2, k4 (26 sts)

Row 11: p (26 sts)

Row 12: k6, [m1, k1] x 2, k11, [m1, k1] x 2, k5 (30 sts)

Row 13: p (30 sts)

Row 14: k7, [m1, k1] x 2, k13, [m1, k1] x 2, k6 (34 sts)

Row 15: p (34 sts)

Row 16: k (34 sts)

Row 17: p17, place the last 17 sts on a stitch holder to hold them to work later (17 sts)

For rows 18 to 22 work the 17 sts on your knitting needle for the first top piece.

Row 18: k (17 sts, RS)

Row 19: p (17 sts, WS)

Row 20: k1, k2tog, k3, ssk, k1, k2tog, k3, ssk, k1 (13 sts)

Row 21: p (13 sts)

Row 22: k1, k2tog, k1, ssk, k1, k2tog, k1, ssk, k1 (9 sts)

Pull through to cast off.

Now place the held 17 sts on your knitting needle with the WS facing you ready to purl.

Row 1: p (17 sts)

Rows 2 to 6: follow the heart pattern rows 18 to 22 (9 sts)

Pull through to cast off.

Making up: First sew the side edges of the heart top together (from the cast off sts down to row 17). Then sew the side edges together for the seam that runs down the centre back of the heart, adding stuffing as you sew. Finish by gathering the cast on sts together at the bottom of the heart.

